

Multifunctional Roof Light
for Motor Homes and Caravans

Important Note!

Please study this information before installing the roof light.

Contents:

- A) Product Information
- B) Installation
- C) Maintenance
- D) Handling

A : Product Information

1. Producer : Remis GmbH, Mathias-Brüggen-Str. 67-69,
D-50829 Cologne
2. Name & Type: REMIstar – electrical multifunctional roof light
3. Production Date: see label on inner frame (e.g. 1KW16.02)
4. Technical Standard.ABG No. D 2271 (acrylic security glass)
5. Application: in caravans and motor homes with roof thickness of
24-60 mm
6. Installation: see page 3-5 and installation guide
7. Description: see page 8-9
8. Dimensions: see fig. I
9. Roof aperture: see fig.II
10. Weight: approx. 10,5 kgs
11. Other: Fixed ventilation of 100cm²
12. Performance: Lighting 3x5W at 12V DC
Motor max. 4.8A at 12V DC
13. Suppression: Motor with radio interference suppression
14. Supply Network: see page 4 + fig.II
15. Models: P/N 10010426: REMIstar with lighting and integrated
switches mounted in the inner frame
P/N 10010215: REMIstar with lighting and integrated
switches mounted in the inner frame and comfort
system (=remote control, rain sensor, obstacle
deactivation)

B. Installation

**We recommend installation of this roof light to be made by experts.
There is no liability/guarantee for incorrect installation.**

1. Conditions:
 - a. You may need additional information from the vehicle producer.
 - b. The roof light must only be installed with the hinge towards the front of the vehicle**
 - c. The sealing between the roof and the outer frame is not included. It must be permanently elastic for **exterior** use. Dimension: 8mm thick and approx. 316 cm long.
We recommend Terostat M110 made by Henkel Teroson GmbH
To ensure a correct seal all surfaces must be clean, dry and free of grease.
 - d. Before Installation:
Follow vehicle producer instructions for retrofitting of rooftops.
Installation can only be made on plain roofs with maximum gradient of 15°. Make sure that supporting struts, electric cables, etc. are not impacted by the cut-out !

Examine inside and outside your vehicle and decide the position where the roof light could be installed. Inside: Is there enough space for mounting the inner frame ? (Avoid collision with doors, furniture, etc.)

Outside: Is there enough space to open of the roof light ?
(Avoid collision with roof racks, satellites receivers, etc.)

The cut-out does not have an influence on supporting cross beams, cables, service pipes, etc.

Consider the location of the electrical wiring and electrical connection to be made later (see fig.II)

The area around the aperture must be stable so that no deflection of the roof occurs when the outer frame is screwed tight. If necessary, use suitable material, such as wood or U-profiles for fitting into the roof wall layers to form a suitable platform.

2. Electrical conditions:
 - a. Electrical wiring must be installed and secured properly by experts. See specific instructions such as per DIN EN 1648 part 1 or 2.
The square diameter of the wiring must have a thickness of at least $A = 1,5 \text{ mm}^2$! The minimum diameter depends on the total length of the wiring: $A = 0,4 \times L$
(A = cross sectional area / cord in mm^2 ; L =wiring length in meter)
 - b. The electrical wiring is to be secured at 10 amperes. The terminals must have isolated contacts.
 - c. The conductions must have isolated contacts (flat pin bushing 6,3) (see fig. II). The connections have to be fixed against falling apart.
 - d. **Damage will occur if the poles are reversed.**

3. Mounting:

- Disconnect the battery and any external electricity supply.
- Position the roof light: see point 1

Install the rooflight according to these fitting instructions.

Fig. 1 and 2:

Check you have all required components.

Fig. 3 to 6:

Cut the roof according to the stencil cut-out (or according to fig. II)

Check the aperture by inserting the roof light without sealing.

Fig. 7:

Insert the sealing in the nap of the outer frame of the rooftop, its ends are to be overlapped by approx. 15mm.

Fig. 8 to 9:

Insert the roof light in the roof aperture, press tight and screw the 16 clamps with the 5mm screws from the inside. Screw them equally several times until the sealing is pressed flat. The maximum screwing torque is = max. 1,5 Nm. If necessary, rescrew after 30 min.

Depending on the roof wall thickness, there are different clamps and screws to be chosen:

For roof thickness 24-32 take clamps L1 and screws of 35mm length

For roof thickness 33-41 take clamps L1 and screws of 40mm length

For roof thickness 42-51 take clamps L1 and screws of 50mm length

For roof thickness 52-60 take clamps L2 and screws of 40mm length

Fig. 10:

Position the inner frame from the inside below the outside frame:

Red wire to positive pole (+) of electrical supply wiring and brown wire to negative pole (-) of electrical supply wiring, use flat quick-connectors. Connect the plug boxes to each other according to the drawing.

Fig. 11:

Insert of the inner frame from inside onto the outside frame, choose central position with help of the crank and screw as indicated, but not too tight.

Fig. 12:

Insert the covering caps.

4. Advise

- Reconnect battery and if necessary reinstall external electricity supply.

Notice: For checking the function, open and close the new roof light several times.

(if the motor does not react, there might be an exchange of the poles (+)(-).

- Remove the protective film from the acrylic cover of the roof light.

C. Maintenance

1. Care: Never use aggressive or corrosive cleaners

The acrylic cover and the frame is to be cleaned only with damp cloth and with mild cleaner that does not contain solvents or abrasives.

Take care that water does not get into the motor and into its electrical wiring. The ventilation grids of the inner frame can be removed for cleaning purposes.

All rubber seals (black) should be dusted with talcum powder at least once per year.

The fly net and pleated sunscreen may be cleaned by using a soft brush or a damp cloth.

2. Retensioning

After demounting the inner frame, the spring of the fly net of blind system can be retensioned (put screwdriver into spring tension clip and turn clockwise 1-2 times).

The cords of the sun screen system can be retightened by unscrewing the clamps with an hexagon spanner. Retighten the cords by 3-5mm if necessary. You should do this on both cords equally in order to keep the crossbars parallel to each other.

3. Documents: User Guide and crank should be stored within the vehicle.

4. Spares: Spare parts can be bought from your dealer.

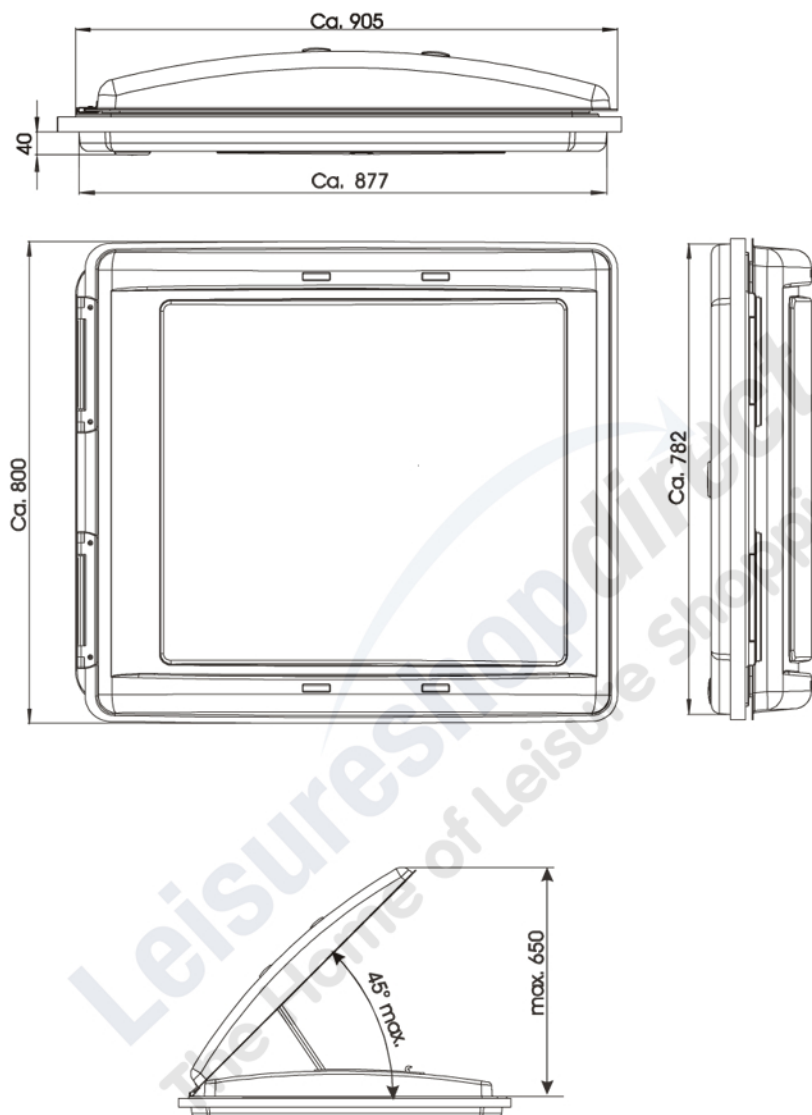


figure I

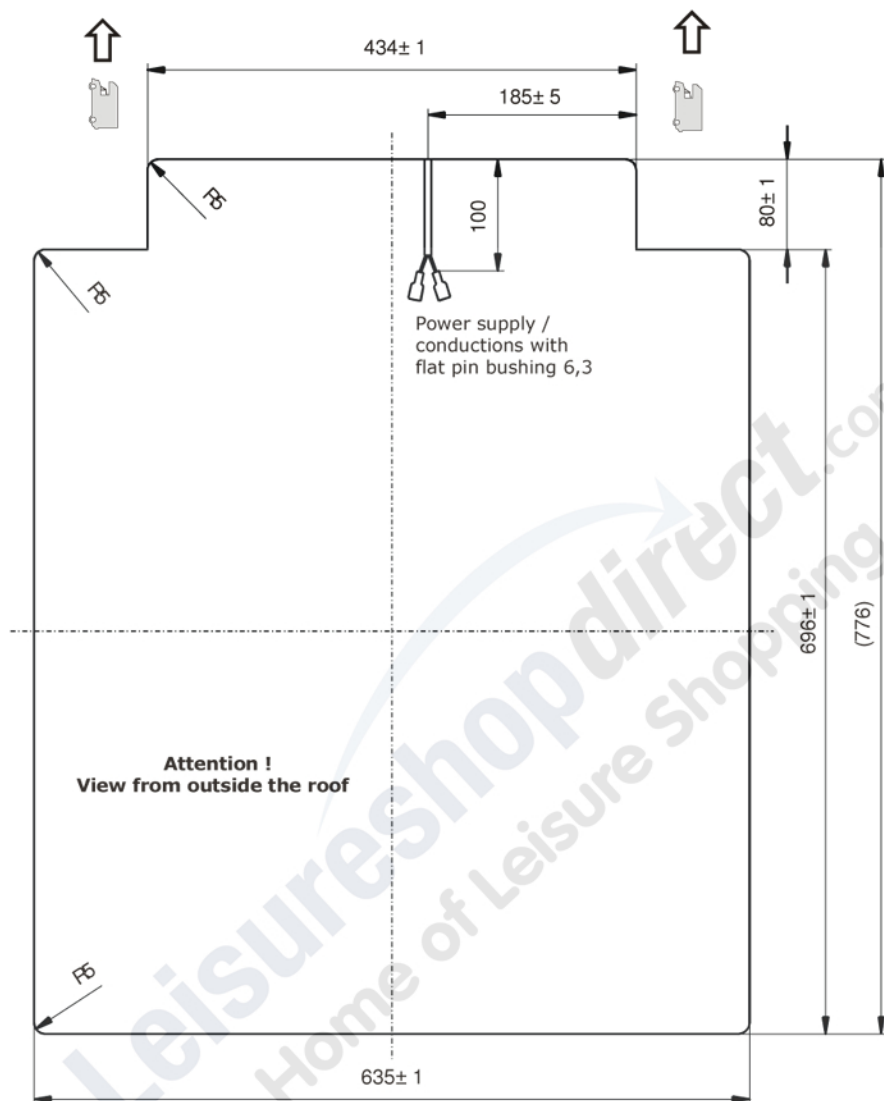


figure II

D. Handling:

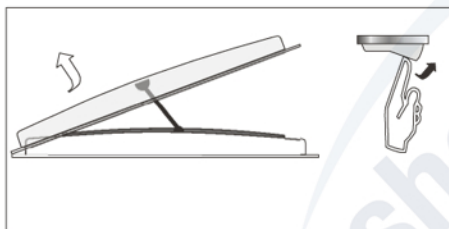
1. Never step onto the roof light.
Never open the roof light when it is heavily raining, windy or hailing.
Never open the roof light at temperatures below -20°C .
Mind the opening space (in garages, under trees, etc.)
Before opening, remove snow, ice or dirt.

2. Keep the roof light closed while driving.

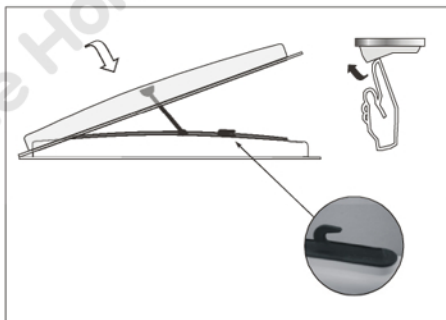
Keep the blinds systems open while driving.

3. Before opening, check for obstacles such as branches. While closing no objects or parts of the body mustn't reach the opening. Attention: risk of injury!

- a) To open the rooflight: Press switch until requested position is reached
At the final position motor stops automatically



- b) For closing and locking the rooflight: Press switch until requested position is reached
To lock completely press the switch until motor stops automatically



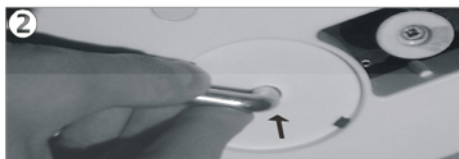
4. Manual usage in case of electricity failure:

Make sure that no obstacles or parts of the body are in the roof light opening.

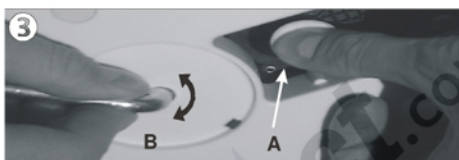
Detach round cap and remove ventilation grid (1)



Insert crank handle completely and hold tight (2)



Press button (3 A) for unlocking motor gear: Keep button pressed and turn the crank handle (3 B) for moving (closing/opening) the rooftop



Attention:

The roof light might close abruptly – Therefore always hold the crank handle securely as long as the gear is unlocked.
For relocking the motor gear, pull the button (A) down and move the crank handle until gear is locked to the motor again.

5. Lighting:

Press the balance switch



6. Sun protection:

Push crossbar of pleated material until requested position is reached



7. Fly net functions:

Push crossbar of fly net against crossbar of pleated material until it locks. To release blind, push both crossbars against each other and press gently. Guide the fly screen back to the open position.



Attention: DO NOT allow the blind to spring back as this will cause damage.